

Venus®

Product Information

One-layer
simplicity –
ideal for
primary teeth!



Venus® Bulk Fill
Simple, fast, safe!

Giving a hand to oral health.



KULZER
MITSUI CHEMICALS GROUP

Venus® Bulk Fill

Simple, fast, safe!

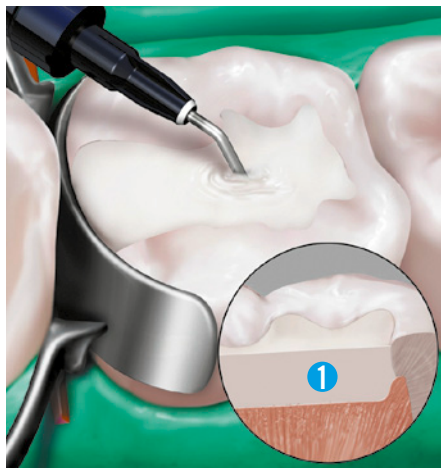
For greater efficiency in posterior restorations.

In everyday practice, when time is tight, a steady hand is still required. We work continually to improve and expand our product portfolio, aiming to save you time and optimise your treatment processes. This is precisely the idea behind Venus Bulk Fill: a flowable, low-shrinkage composite for creating posterior restorations with a bulk-filling technique that is simple, fast and safe, and saves a lot of time.

One-layer simplicity – ideal for primary teeth.

In addition, Venus Bulk Fill is even easier and faster to apply on primary teeth. You do not need a second layer of any universal composite, which saves time and makes it ideal for the treatment of children. As such it represents a huge chance to give children a relaxed take-off into dental experience.

Primary Teeth



- 1 One Venus Bulk Fill layer up to 4 mm

Adult Teeth



- 1 Venus Bulk Fill layer up to 4 mm
- 2 2mm conventional composite layer.

Venus® Bulk Fill

Stress-free for you and patients of all ages.

Taking opportunities when they present themselves – with Venus Bulk Fill.

- **Efficiency:**

Venus Bulk Fill enables simple filling techniques in one layer of up to 4 mm for class I and II cavities. And for children, the treatment process ends here – after the light curing. On adult teeth a final 2 mm layer of universal composite, such as Venus Diamond or Venus Pearl, is applied subsequently. Complex, time-consuming techniques using 2 mm layers are not necessary. This helps to save time and costs on each restoration, unlike traditional, laborious layering procedures. A total of 82% of surveyed dentists claimed that they saved up to 10 hours of chair time per month by using a bulk fill material.*

- **Easy to use:**

Self-adaptive handling eliminates steps and provides ideal coverage of cavity floor and walls. Venus Bulk Fill is compatible with all (meth)acrylate-based bonding adhesives and composites. Venus Bulk Fill offers simple dispensing and placement via a convenient Pre-Loaded Tip (PLT) or syringe.

- **Safe ty:**

Venus Bulk Fill delivers a high depth of cure and safety for polymerisation of layers up to 4 mm thick. Low shrinkage means long-lasting restorations. High radiopacity guarantees a reliable diagnosis.

* Integrated media survey May 2010 in USA.



Venus® Bulk Fill

Clinical practice.

Venus Bulk Fill in a class I restoration.



Amalgam restoration and recurrent decay are removed buccolingually, yielding a class I cavity.



iBOND Self Etch, our all-in-one adhesive with high bond strength, is applied to the preparation and agitated with a microbrush for 20 seconds.



Venus Bulk Fill is used to fill the cavity at a layer thickness of 4 mm.



The ideal flow properties of Venus Bulk Fill mean that subsequent correction is superfluous. The Venus Bulk Fill layer is light-cured for 20 seconds.



A final 2 mm layer of Venus Diamond or Venus Pearl in shade A2 is applied and the margins of the restoration adapted. The Venus composite is then light-cured for 20 seconds.



The high radiopacity of Venus Bulk Fill permits an exact, reliable diagnosis.

Relaxed restorations for primary teeth.



To support you in giving children a relaxed and stress-free access to dentistry, we added a set of six finger puppets to the Venus Bulk Fill Pediatric Kits. These are designed to entertain the small patients during the treatment and might also help in explaining the treatment routine.

So far, caries in primary teeth have often been a problem because children don't keep still. Beyond that, conventional composite restorations are complex and time-consuming, overstraining the patience of little patients. With Venus Bulk Fill these reservations are a thing of the past. Primary teeth don't need the long-term stability of adult teeth, so that one layer of Venus Bulk Fill with up to 4 mm is sufficient. You can spare both yourself and the child the application of a second layer with universal composite.

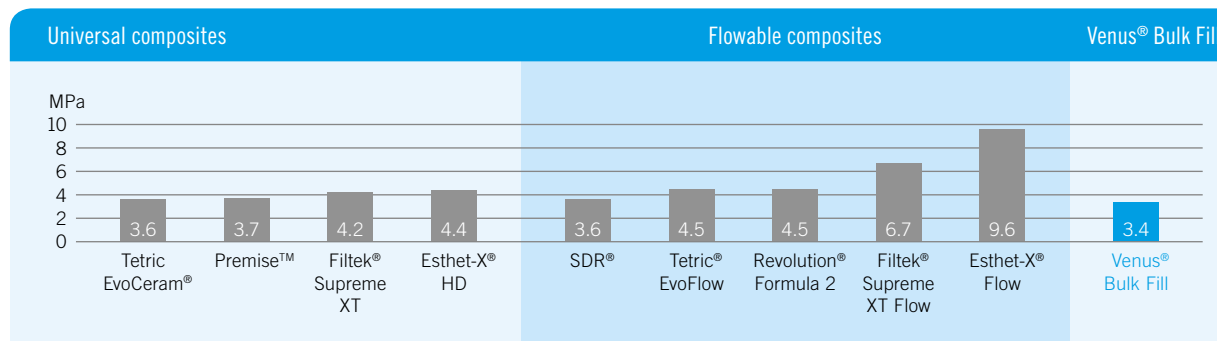
Venus® Bulk Fill

Scientifically tested.

Venus Bulk Fill has been scientifically tested.

Venus Bulk Fill produces superior, long-lasting posterior restorations and has been tested in numerous clinical studies.

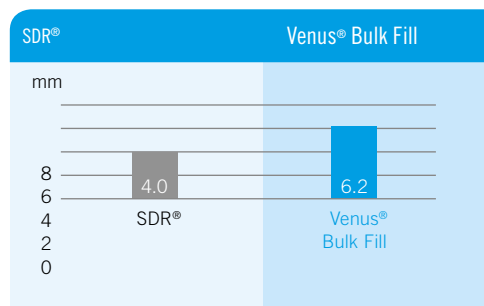
Shrinkage stress



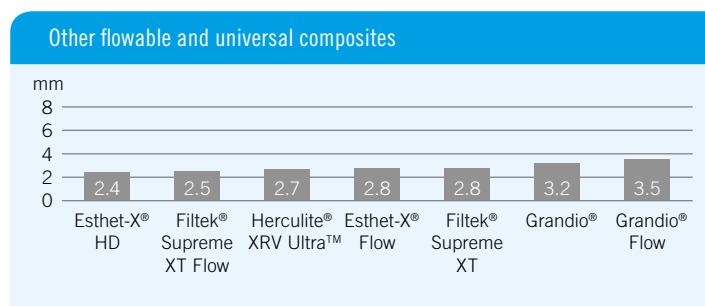
Source: Kulzer R&D, Wehrheim, Germany. Unpublished data. Documentation available.

► Venus Bulk Fill exhibits a reduction in shrinkage stress which will reduce internal forces on bonded interfaces.

Depth of cure



Source: Kulzer R&D, Wehrheim, Germany. Unpublished data. Documentation available.



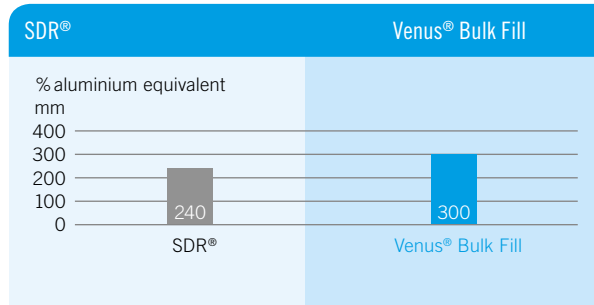
Source: ADA Professional Product Review, Spring 2010, Volume 5, Issue 2, and technical data as provided by the manufacturer.

► Venus Bulk Fill delivers a high depth of cure and safety for polymerisation of layers up to 4 mm thick.

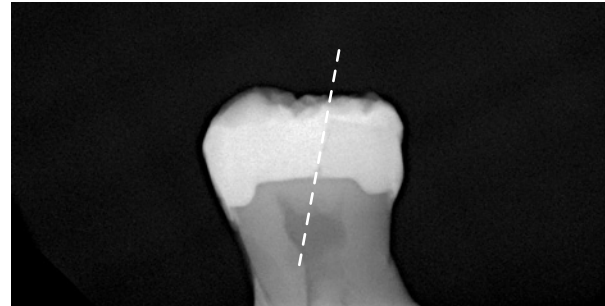
Venus® Bulk Fill

Scientifically tested.

Radiopacity



Source: Kulzer R&D, Wehrheim, Germany. Unpublished data. Documentation available.



Radiopacity Venus Bulk Fill/SDR

- Venus Bulk Fill exhibits 300 % aluminium equivalent radiopacity. The higher radiopacity ensures clear diagnostic capabilities and allows for more accurate diagnosis.

Physical properties of Venus Bulk Fill

Physical properties	Venus® Bulk Fill / Universal Shade	SDR® / Universal Shade
Depth of cure [mm] (ISO 4049)	6.2	4.0
Shrinkage stress [MPa] (after 24 h, photoelastic measurement)	3.4	3.6
Compressive strength [MPa]	331	233
Flexural strength [MPa]	120	120
Radiopacity [% Al] (ISO 4049)	300	240
3 Body Wear Resistance [µm] (ACTA method, poppy seed, 300,000 cycles) [mm³]	32 0.31	41 0.39
Working time [s] (ISO 4049)	80	50
Conversion rate [%] (blue light; 600 mW/cm²; 20 sec., FTIR spectrometer)	55	49

Source: Kulzer R&D, Wehrheim, Germany. Unpublished data. Documentation available.

Venus® Bulk Fill

Product range.

Our Venus Bulk Fill Kits include the required materials for a complete aesthetic restoration – and for your little patients even a bit more:

Intro kits for adults:

- **Bonding:** iBOND Self Etch or iBOND Total Etch
- **Base layer:** Venus Bulk Fill
- **Final top layer:** Venus Diamond

Pediatric kits for children:

- **Bonding:** iBOND Self Etch
- **Single layer:** Venus Bulk Fill
- **Diversion:** 1 out of 6 available finger puppets

► Venus Diamond and Venus Pearl are available in a wide range of shades, and like iBOND Self Etch and iBOND Total Etch are supplied in different pack sizes. Please refer to your distributor catalogue or contact your Kulzer Sales Specialist.

Refills

Venus Bulk Fill PLT Refill

10x 0.2 g PLTs
Venus Bulk Fill –
universal shade
Art.-No.: 66044743

Venus Bulk Fill Syringe Refill

1x 1.8 g syringe
Venus Bulk Fill –
universal shade
Art.-No.: 66046795

Intro kits for adults

Venus Bulk Fill Syringe Intro Kit A3 + iBOND Total Etch

3x 1.8 g syringes
Venus Bulk Fill –
universal shade
5x 0.25 g PLTs
Venus Diamond A3
1x 2 ml bottle of
iBOND Total Etch
Art.-No.: 66046794

Venus Bulk Fill Syringe Intro Kit A3 + iBOND Self Etch

3x 1.8 g syringes
Venus Bulk Fill –
universal shade
5x 0.25 g PLTs
Venus Diamond A3
1x 2 ml bottle of
iBOND Self Etch
Art.-No.: 66046793

Pediatric kit for children

Venus Bulk Fill Syringe Pediatric Kit + iBOND Self Etch

4x 1.8 g syringes
Venus Bulk Fill –
universal shade
1x 2 ml bottle of
iBOND Self Etch
1 out of 6 available
finger puppets
Art.-No.: 66057342



iBOND® Universal – All-purpose convenience.

Our definition of universal bonding is convenience:

- **Unique moisture control and instant bonding success:** Due to the unique moisture control system and optimised monomer blend, iBOND Universal offers excellent dentine penetration and reliable bond strength.
- **The all-rounder for bonding matters:** iBOND Universal enables bonding of composite, precious metal, non-precious metal, zirconia or glass ceramic, and is compatible with light-cure, dual-cure and self-cure materials.
- **Easy and precise application:** Self-etch, total-etch or selective etch – the choice is yours. In addition, our specially designed drop control delivers just the amount of bonding agent you need.



New address as of 01 July 2017:

KULZER GmbH
Leipziger Straße 2
63450 Hanau
Germany



Contact in Germany

Heraeus Kulzer GmbH
Grüner Weg 11
63450 Hanau, Germany
info.dent@kulzer-dental.com

Tetric EvoCeram® and Tetric® EvoFlow are trademarks of Ivoclar Vivadent AG • Premise™, Revolution® Formula 2 and Herculite® XRV Ultra™ are trademarks of Kerr Corporation • Filtek® Supreme XT and Filtek® Supreme XT Flow are trademarks of 3M Company • SDR® is a trademark of Dentsply DeTrey GmbH • Esthet-X® HD and Esthet-X® Flow are trademarks of Dentsply Sirona Inc. • Grandio® and Grandio® Flow are trademarks of Voco GmbH